



Engineered by Suzuki Sangyo, Japan

THE SUZUKI JOURNEY



KIICHIRO SUZUKI

鈴木喜一郎

The journey of Mr. Suzuki is central to our story: The Suzuki Edge.

Mr. Kiichiro Suzuki was born in March 1896 in the city of Kosai, Japan. At the young age of 19, Suzuki started his career in textiles, the blue-chip industry of the time, with an entry level position at Toyoda Boshoku (part of the Toyota Group). During his time at the Toyota Group, Suzuki held various positions culminating in the coveted position of Director at Toyoda Machinery Ltd. and Managing Director of its Textile Machinery Division.

In the mid 1950s, Suzuki saw the opportunity to establish a high quality Top Roller manufacturing unit. This, in turn, led to the creation of Suzuki Sangyo Kaisha. Within ten years, Suzuki Sangyo was a dominant player in the Top Roller market and firmly established itself as number one in both market share and quality in Japan.

By the late 1970s, Suzuki's Top Rollers were so technically superior that it became the only Top Roller manufacturer left in Japan. With an unmatched technical edge, over the next four decades Suzuki expanded into global markets establishing itself as the undisputed benchmark for Top Rollers.

TIMELINE

1896

Kiichiro Suzuki is born in Kosai, Shizuoka, Japan

1915

Suzuki joins Toyoda Judou Boshoku

1947

Suzuki is promoted to Director-Toyoda Machinery

1955

Suzuki establishes Suzuki Sangyo Kaisha

1960

Suzuki supplies to Hara Cherry & Howa

1991

Suzuki expands globally and becomes the benchmark in quality

1980

Suzuki is the only Top Roller manufacturer left in Japan

1974

Takeshi Suzuki takes over as President

1970

Suzuki is honoured by the Japanese government

1968

Suzuki supplies to Toyoda Automatic Loom Works

2005

Shigeo Suzuki takes over as president

2019

Suzuki & Inarco explore a collaboration

2020

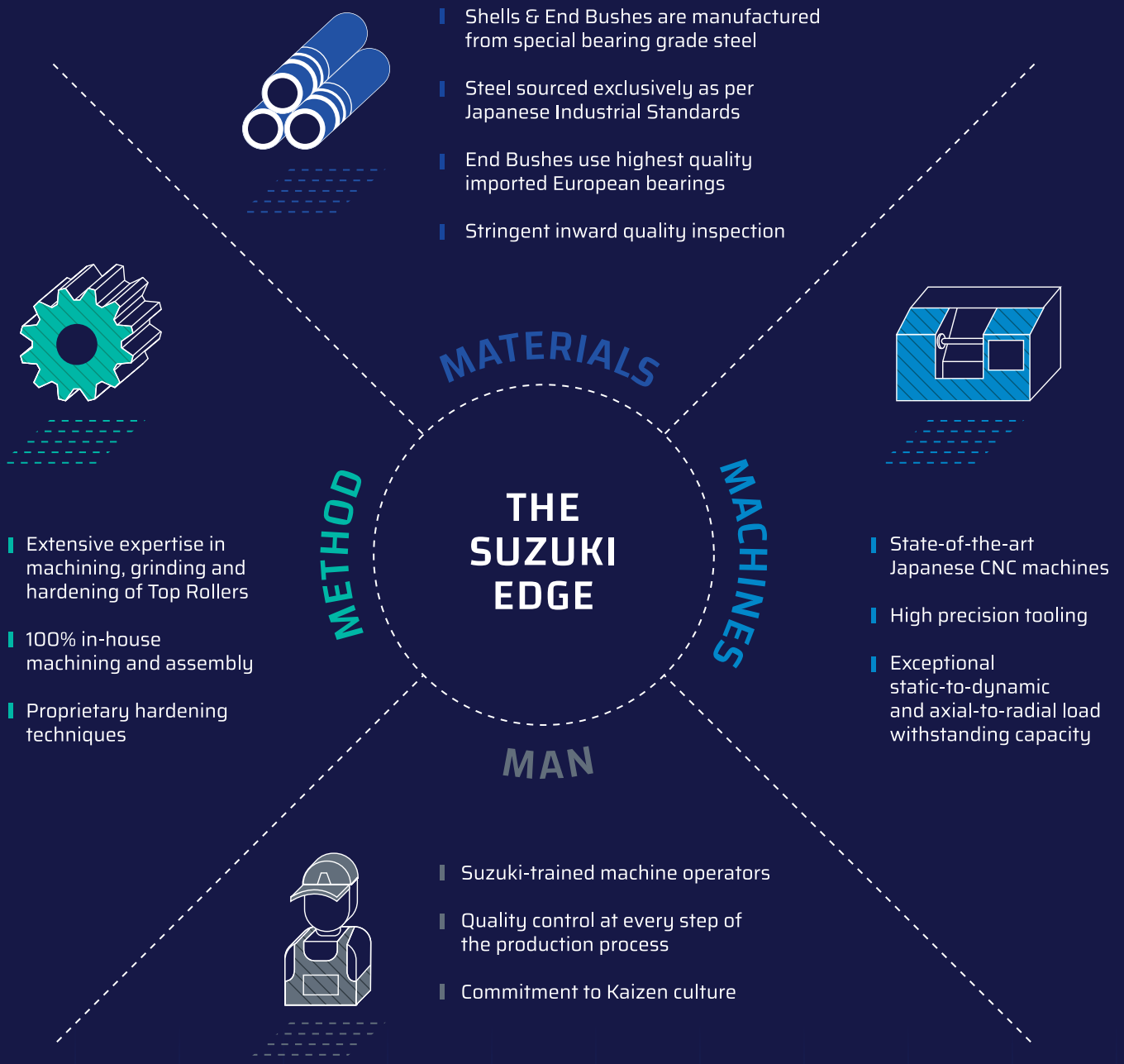
Suzuki & Inarco enter into an exclusive partnership

2022

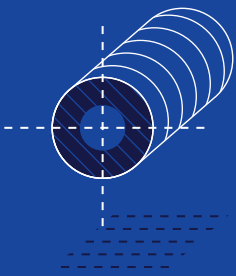
Suzuki Rollers is formally launched

67 YEARS OF PIONEERING JAPANESE TECHNOLOGY

Suzuki designs and engineers Top Rollers without compromise, making it synonymous with excellence across the global yarn spinning industry



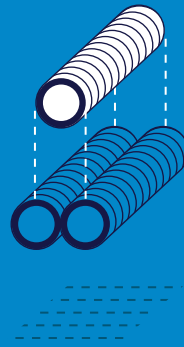
SUZUKI'S UNMATCHED EXCELLENCE



Design tolerances according to OEM fitment standards



Geometrical tolerance assurance



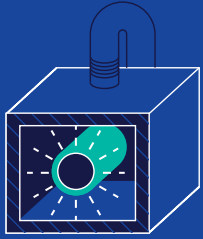
Use Suzuki approved precise steel grades



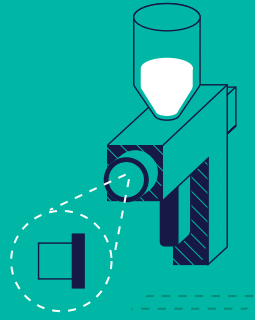
High precision CTQ dimensions

01 EXTRAORDINARY SERVICE LIFE

- Superior design to OEM & alternate manufacturers
- Precision fitment between Top Roller assembly & bearing slide
- Product consistency as per Japanese standards



Proprietary
heat treatment
parameters



Specially
coated End
Bushes



Durable guide
bracket of End
Bushes



Fungible
End Bushes

02 SMOOTH RUNNING BEHAVIOUR

- Consistent sliver quality
- Reduced frictional torque
- Zero vibration
- Low noise exposure

03 THERMAL STABILITY

- Superior heat dissipation
- Dimensional stability and low deformation
- Less lubrication requirement

PRODUCT SERIES

Suzuki Rollers are available for all generations of preparatory machines



DRAW FRAME

SZ 200 SERIES

- High running accuracy and high speed performance
- Enhanced heat flow and precise control of total heat flux
- Best in class heat dissipation and superior thermal stability at high speeds
- Special heat treatment process results in dimensional stability and optimum hardness



COMBER DETACHING

SZ 300 SERIES

- Proprietary heat treatment process results in minimum distortion at high-speed oscillation
- Accurate geometric dimensions and narrowest tolerance in the industry increases End Bush life



COMBER DRAWBOX

SZ 400 SERIES

- Precise internal clearance fit between bearing and shaft for even load distribution
- Enhanced greasing intervals
- Exceptional static-to-dynamic and axial-to-radial load withstanding capacity for new generation machines



LAP FORMER

SZ 500 SERIES

- Precise dimensional tolerances to process large fiber volumes at high speeds
- Exceptional static-to-dynamic and axial-to-radial load withstanding capacity

SUZUKI ROLLERS

B2, 801 Marathon Innova, Ganpatrao Kadam Marg, Lower Parel, Mumbai 400 013, INDIA

#702, 4-19 Hacho-Dori, Toyohashi-shi, Aichi 440-0806, JAPAN

E-mail: sales@szrollers.com • Website: www.szrollers.com

Mumbai • Bhavnagar • Chandigarh • Bhilwara • Kolkata • Coimbatore • Madurai • Guntur
Toyohashi (Japan) • Dhaka (Bangladesh) • Bandung (Indonesia) • Wuxi (China)